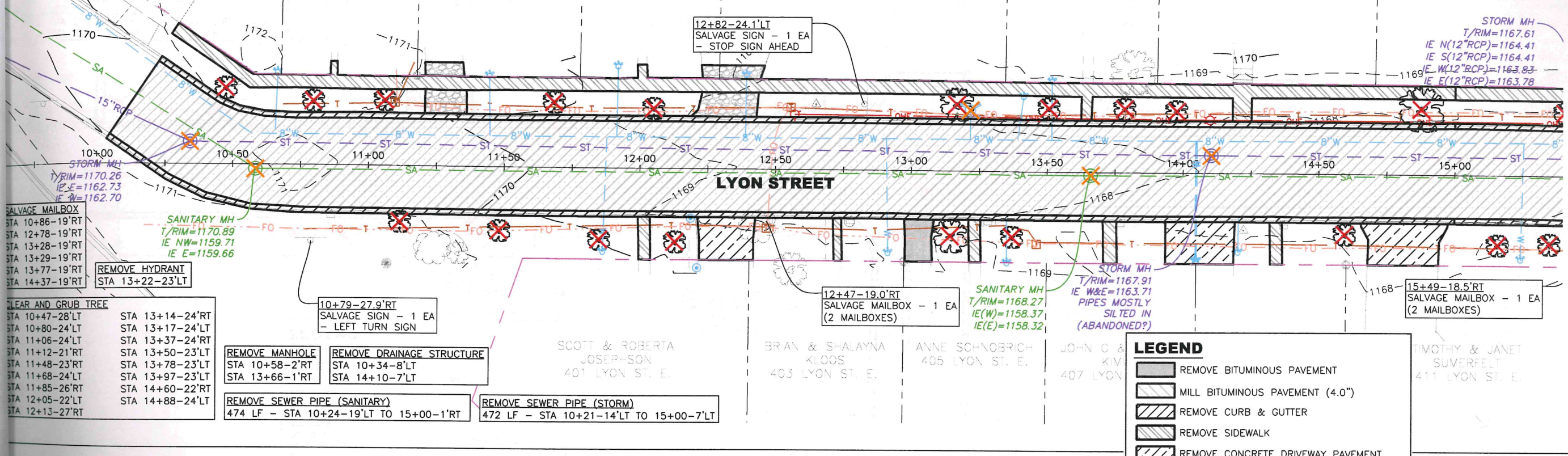


STA 10+00 TO STA 15+00  
 17 SY - REMOVE BITUMINOUS PAVEMENT  
 797 SY - MILL BITUMINOUS PAVEMENT (4.0")  
 985 LF - REMOVE CURB & GUTTER  
 125 SY - REMOVE CONCRETE DRIVEWAY PAVEMENT  
 310 SY - REMOVE SIDEWALK



SALVAGE MAILBOX  
 STA 10+86-19'RT  
 STA 12+78-19'RT  
 STA 13+28-19'RT  
 STA 13+29-19'RT  
 STA 13+77-19'RT  
 STA 14+37-19'RT

REMOVE HYDRANT  
 STA 13+22-23'LT

CLEAR AND GRUB TREE  
 STA 10+47-28'LT  
 STA 10+80-24'LT  
 STA 11+06-24'LT  
 STA 11+12-21'RT  
 STA 11+48-23'RT  
 STA 11+68-24'LT  
 STA 11+85-26'RT  
 STA 12+05-22'LT  
 STA 12+13-27'RT

10+79-27.9'RT  
 SALVAGE SIGN - 1 EA  
 - LEFT TURN SIGN

REMOVE MANHOLE  
 STA 10+58-2'RT  
 STA 13+66-1'RT

REMOVE DRAINAGE STRUCTURE  
 STA 10+34-8'LT  
 STA 14+10-7'LT

REMOVE SEWER PIPE (SANITARY)  
 474 LF - STA 10+24-19'LT TO 15+00-1'RT

REMOVE SEWER PIPE (STORM)  
 472 LF - STA 10+21-14'LT TO 15+00-7'LT

12+82-24.1'LT  
 SALVAGE SIGN - 1 EA  
 - STOP SIGN AHEAD

STORM MH  
 T/RIM=1167.61  
 IE N(12"RCP)=1164.41  
 IE S(12"RCP)=1164.41  
 IE W(12"RCP)=1163.83  
 IE E(12"RCP)=1163.78

12+47-19.0'RT  
 SALVAGE MAILBOX - 1 EA  
 (2 MAILBOXES)

SANITARY MH  
 T/RIM=1168.27  
 IE W=1158.37  
 IE E=1158.32

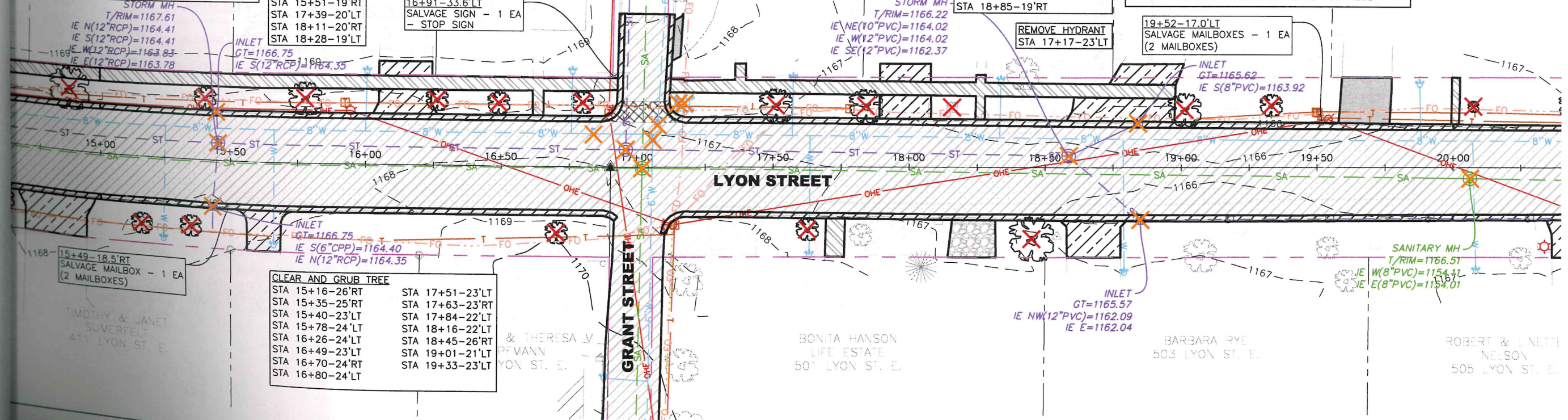
STORM MH  
 T/RIM=1167.91  
 IE W&E=1163.71  
 PIPES MOSTLY  
 SILTED IN  
 (ABANDONED?)

15+49-18.5'RT  
 SALVAGE MAILBOX - 1 EA  
 (2 MAILBOXES)

**LEGEND**

- REMOVE BITUMINOUS PAVEMENT
- MILL BITUMINOUS PAVEMENT (4.0")
- REMOVE CURB & GUTTER
- REMOVE SIDEWALK
- REMOVE CONCRETE DRIVEWAY PAVEMENT
- REMOVE CONCRETE PAVEMENT
- EXISTING GRAVEL SURFACING
- CLEAR & GRUB TREE
- REMOVE STORM PIPE, STRUCTURE, ETC.
- REMOVE & SALVAGE FENCE FOR RESET

STA 15+00 TO STA 20+00  
 40 SY - REMOVE BITUMINOUS PAVEMENT  
 865 SY - MILL BITUMINOUS PAVEMENT  
 16 SY - REMOVE CONCRETE PAVEMENT  
 035 LF - REMOVE CURB & GUTTER  
 172 SY - REMOVE CONCRETE DRIVEWAY PAVEMENT  
 228 SY - REMOVE SIDEWALK



REMOVE SEWER PIPE (SANITARY)  
 496 LF - STA 15+00-1'RT TO 20+00-4'RT  
 65 LF - STA 17+03-46'LT TO 17+02-19'RT

SALVAGE MAILBOX  
 STA 15+47-19'RT  
 STA 15+50-19'RT  
 STA 15+51-19'RT  
 STA 17+39-20'LT  
 STA 18+11-20'RT  
 STA 18+28-19'LT

REMOVE MANHOLE  
 STA 17+02-0'RT

CLEAR AND GRUB TREE  
 STA 15+16-26'RT  
 STA 15+35-25'RT  
 STA 15+40-23'LT  
 STA 15+78-24'LT  
 STA 16+26-24'LT  
 STA 16+49-23'LT  
 STA 16+70-24'RT  
 STA 16+80-24'LT

STA 17+51-23'LT  
 STA 17+63-23'RT  
 STA 17+84-22'LT  
 STA 18+16-22'LT  
 STA 18+45-26'RT  
 STA 19+01-21'LT  
 STA 19+33-23'LT

REMOVE SEWER PIPE (STORM)  
 492 LF - STA 15+00-7'LT TO 20+00-19'RT  
 34 LF - STA 15+43-25'RT TO 15+45-18'LT  
 38 LF - STA 16+96-6'LT TO 16+97-46'LT  
 24 LF - STA 18+59-4'LT TO 18+84-16'LT

STORM MH  
 T/RIM=1166.22  
 IE NE(10"PVC)=1164.02  
 IE W(12"PVC)=1164.02  
 IE SE(12"PVC)=1162.37

REMOVE DRAINAGE STRUCTURE  
 STA 15+43-17'RT  
 STA 15+45-18'LT  
 STA 15+45-7'LT  
 STA 16+96-6'LT  
 STA 18+59-4'LT  
 STA 18+84-16'LT  
 STA 18+85-19'RT

REMOVE HYDRANT  
 STA 17+17-23'LT

19+52-17.0'LT  
 SALVAGE MAILBOXES - 1 EA  
 (2 MAILBOXES)

INLET  
 GT=1165.57  
 IE NW(12"PVC)=1162.09  
 IE E=1162.04

SANITARY MH  
 T/RIM=1166.51  
 IE W(8"PVC)=1154.41  
 IE E(8"PVC)=1154.01

E. Lyon Street Improvements  
 Minnesota, Minnesota

Existing Conditions & Removals  
 I HEREBY CERTIFY THAT THIS PLAN, SPECIFICATION OR REPORT WAS PREPARED BY ME OR UNDER MY DIRECT SUPERVISION AND THAT I AM A FULLY LICENSED PROFESSIONAL ENGINEER UNDER THE LAWS OF THE STATE OF MINNESOTA.  
 SIGNATURE: *Ricky J. Reinhardt, P.E.* DATE: 7/11/2024 REG. NO.: 59065

Project Manager: TEB  
 Designer: RJR  
 Project Number: 670047  
 Phone: (605) 339-4157

